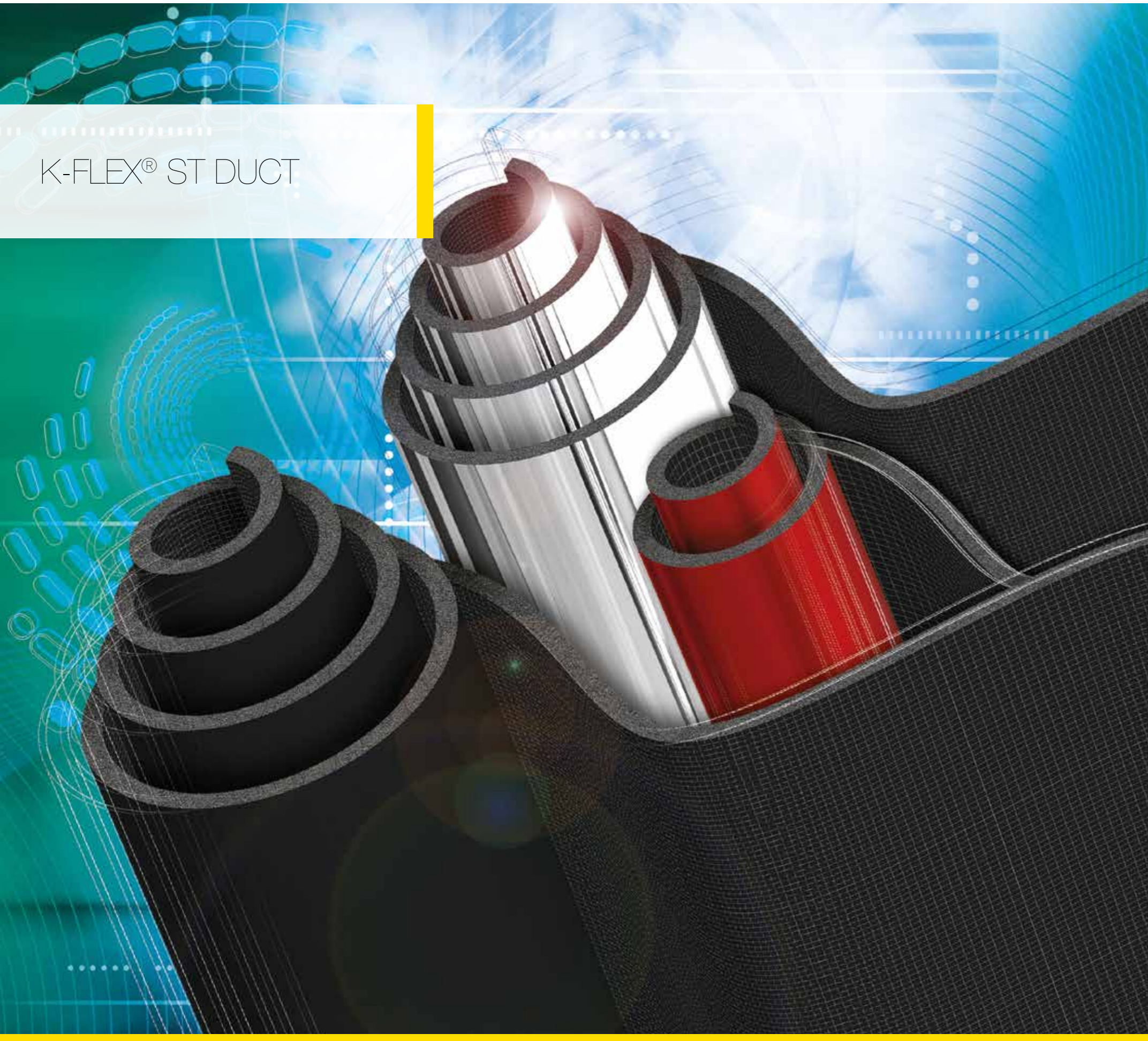


K-FLEX® ST DUCT



K-FLEX® ST DUCT

- ▶ ELASTOMERIC INSULATION SHEETS FOR AIR DUCTING
- ▶ SPECIALLY DESIGNED FOR ISOLATION OF VENTILATION DUCTS
- ▶ 1.5M WIDTH REDUCES INSTALLATION TIMES
- ▶ ADHESIVE COATING

> Site <



> Video <



> App. Manual <





Property	Value	Test method
Temperature range	From -40 °C to +85 °C	EN 14706 EN 14707
Thermal conductivity λ W/(m·K)	Thicknesses \leq 25mm	EN 13787 EN 12667
	-20 °C = 0,031	
	0 °C = 0,033	
	+20 °C = 0,035	
	+40 °C = 0,037	
Corrosion prevention	Thicknesses $>$ 25mm	EN 13468
	-20 °C = 0,034	
Permeability μ	0 °C = 0,036	EN 12086
	+20 °C = 0,038	
Fire rating	+40 °C = 0,040	EN 13501-1

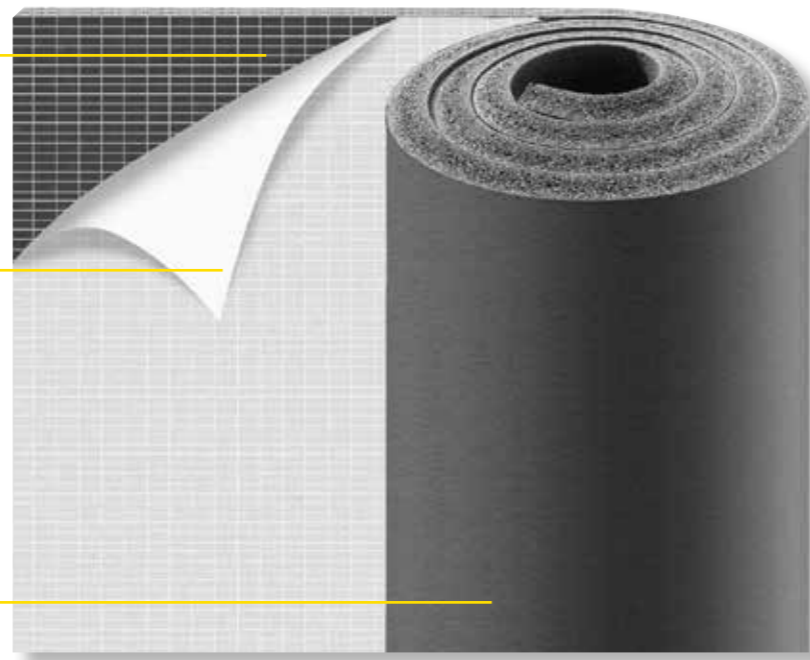
K-FLEX® reserves the right to change data and technical requirements without notice.

K-FLEX® ST DUCT ▶ PRODUCT FEATURES

Adhesive coating

Removable liner

K-FLEX® ST elastomeric insulation



K-FLEX® ST DUCT

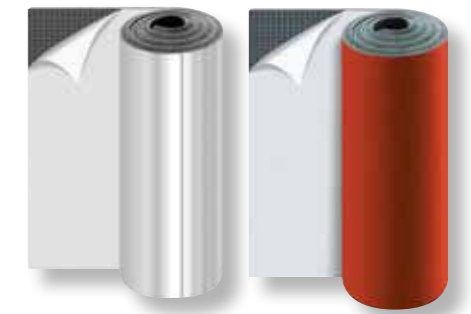
K-FLEX® ST DUCT is specifically produced for the insulation of ventilation and air-conditioning ducts, meeting all the necessary requirements in terms of structure and dimensions.

Economical: flexible and easy to handle, it is made in measurements of 1500 mm in width to ensure easy installation on ducts.

Practical: the self-adhesive surface has been made rougher to improve its grip on the metal ducts.

Convenient: its 1500 mm width cuts down on application time, reducing the final cost of pre-fabricated ducts.

Flexible: high elasticity helps attenuate vibrations that occur where there are joints and suspensions.



K-FLEX® ST DUCT - FINISHES

K-FLEX® ST DUCT ALU
Elastomeric self-adhesive sheet with reinforced mesh and a smooth aluminium 80 μ thick covering. Width: 1500 mm. Euroclass C-s3,d0

K-FLEX® ST DUCT AL CLAD SYSTEM
Elastomeric self-adhesive sheet, with reinforced mesh and AL CLAD covering. Width: 1500 mm. Euroclass D-s3,d0

K-FLEX® ST DUCT COLOR SYSTEM
Elastomeric self-adhesive sheet, with reinforced mesh and COLOR coating. Width: 1500 mm. Euroclass C-s3,d0

K-FLEX® KRAFT
Elastomeric self-adhesive sheet, with reinforced mesh and a smooth aluminium 7 μ thick covering. Width: 1500 mm. Euroclass E

PRODUCT RANGE ▶ K-FLEX® ST DUCT

	THICKNESSES	HEIGHT
K-FLEX® ST DUCT - Sheets	6-8-10-12-15-20-30 mm	1500 mm



PROJECTS ▶
K-FLEX® ST DUCT AL CLAD

Italy, Rimini
Mall "Le Befane"

